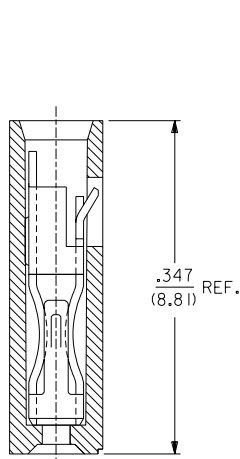
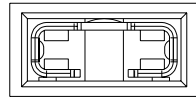


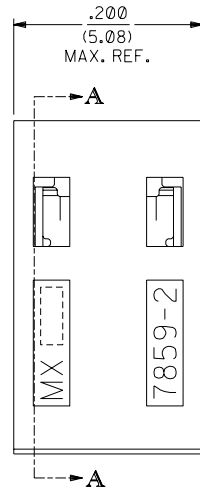
EDP NO.	ENG NO.	FINISH
15-38-1024	A-7859-2164	TIN OVERALL
15-29-1024	A-7859-2554	15 GOLD
15-29-1026	A-7859-2561	30 GOLD

PART IDENTIFICATION:

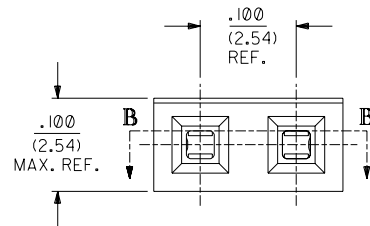
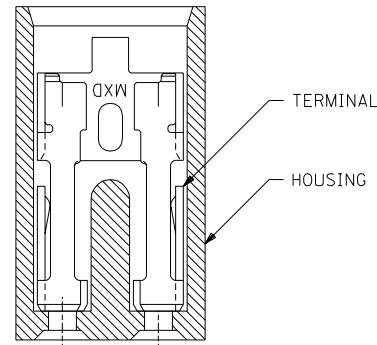
A-7859-2***
 └── PLATING SPECIFICATION



SECTION A-A



SECTION B-B



NOTES:

1. THIS PRODUCT CONFORMS TO MOLEX PRODUCT SPEC. PS-7859.
2. TO BE USED WITH .025/(0.64) SQUARE PINS.
3. MINIMUM MATING PIN LENGTH: .200/(5.08)
4. PRODUCT IS PACKAGED IN BOXES PER PK-70873-0815

FINISH SPECIFICATION

TIN OVERALL - .000150 MINIMUM TIN PLATE OVER
 .000050 MINIMUM NICKEL UNDERPLATE.
 15 GOLD - .000015 MINIMUM GOLD PLATE IN SELECT AREA OVER
 .000050 MINIMUM NICKEL UNDERPLATE OVERALL.
 30 GOLD - .000030 MINIMUM GOLD PLATE IN SELECT AREA OVER
 .000050 MINIMUM NICKEL UNDERPLATE OVERALL.

MATERIAL:

HOUSING: GLASS FILLED POLYESTER; 94V-0; COLOR: BLACK.
 TERMINAL: PHOSPHOR BRONZE ALLOY

NOTE FOR LEAD FREE CONVERSION:

THE PRIMARY SHIPPING CARTON WILL BE LABELED "COMPLIANT TO ROHS DIRECTIVE 2002/95/EC AND ELV ANNEX II OF DIRECTIVE 2000/53/EC". CARTONS WITHOUT THIS LABEL MAY CONTAIN PRODUCT WITH LEAD.

7859

D	LEAD FREE CONV ECN UCP2004-2133 RKADAMS 04/04/27
C1	ADDED PKG. SPEC. PER ECN U10786 WHETSTON 97/2/7
C	CHANGED MATERIAL PER ECR # U51214 95/06/02 CAC
B	REVISED ENG. NOS. PER ECR # U31581 10/26/93 REED
A	RELEASED PER ECR # U30372 03/11/93 REED
3	REVISE GOLD PLTG. PER ECR # U12055 10/18/91 AAB
2	REVISE TERM. PLTG. PER ECR # U11096 06/18/91 AAB
1	*X* RELEASE PER ECR # U10445 02/07/91 AAB

DIMENSIONS SHOWN (METRIC) INCH		UNLESS OTHERWISE SPECIFIED TOLERANCES: ANGULAR ± 1/2°	
3 PLACE	±	INCH	METRIC
3 PLACE	±	.005	---
2 PLACE	±	.01	± 0.13
1 PLACE	---	±	0.25

DRAFT WHERE APPLICABLE MUST REMAIN WITHIN DIMENSIONS

DRWG. BY: AAB	CHK'D. BY:	FILE NAME: 57859X1	THIS DRAWING CONTAINS INFORMATION THAT IS PROPRIETARY TO MOLEX INC. AND SHOULD NOT BE USED WITHOUT WRITTEN PERMISSION.
APP'D. BY: MJM	SCALE: 10: 1	DRWG. NO. SDA-7859-2***N	DATE: 02/07/91

SEE CHART

MFG.	SH.	REV.	LTR.	REVISIONS
▽ = 0	▽ = 0			REVISE ONLY ON CAD SYSTEM

TITLE: SALES ASSY - SHUNT 2-CIRCUIT TERMINAL W/OPEN END

MOLEX INCORPORATED
 LITSE, ILL. 60532 U.S.A.

SHEET NO. 1 OF 1
 DATE: 02/07/91